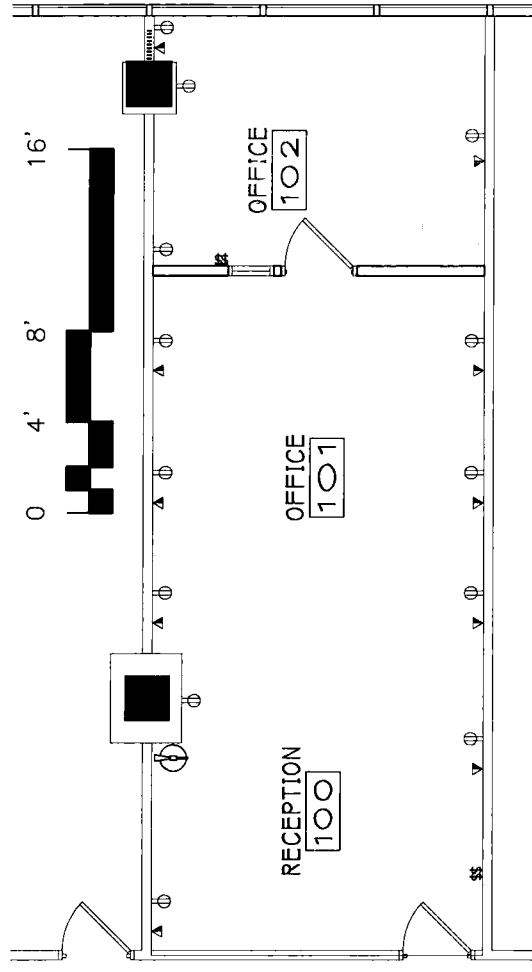


Suite 226
720 RSF

395 Oyster Point



LEGEND

	(N) WALL
	(E) WALL
	DEMO
	(N) DOOR
	(E) DOOR
	(N) WINDOW
	(E) WINDOW
	(E) ELEC.
	(N) DUPLEX
	(N) QUAD



DESCRIPTION:

STE 129 LEASING PLAN - 722 RSF

JOB NAME:

JOB#: 210133

LOCATION:

400 OYSTER PT.
DRAWN BY: THH

DATE: 10/13/10

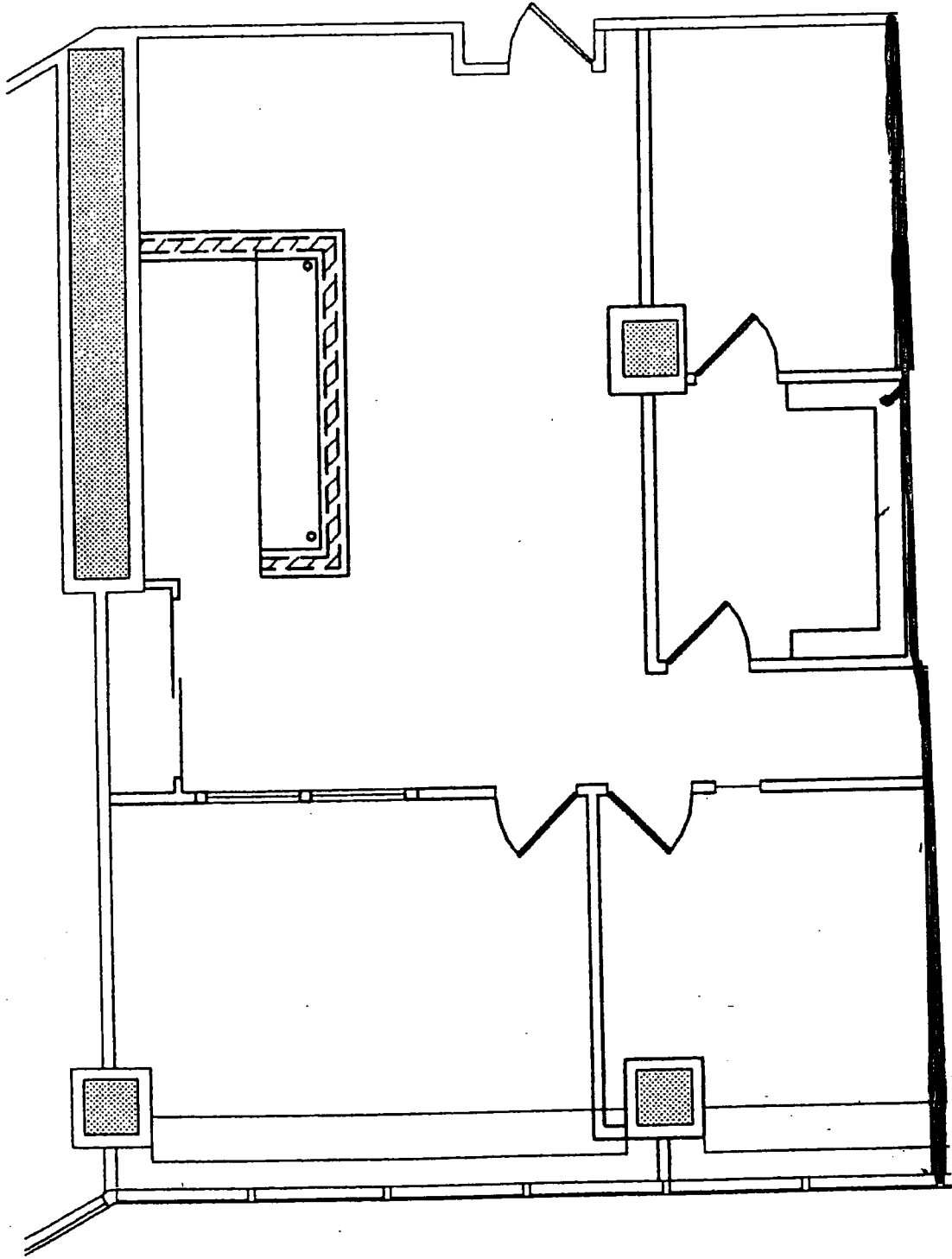
SCALE: 1/8"=1'-0"

CONTRACTOR:

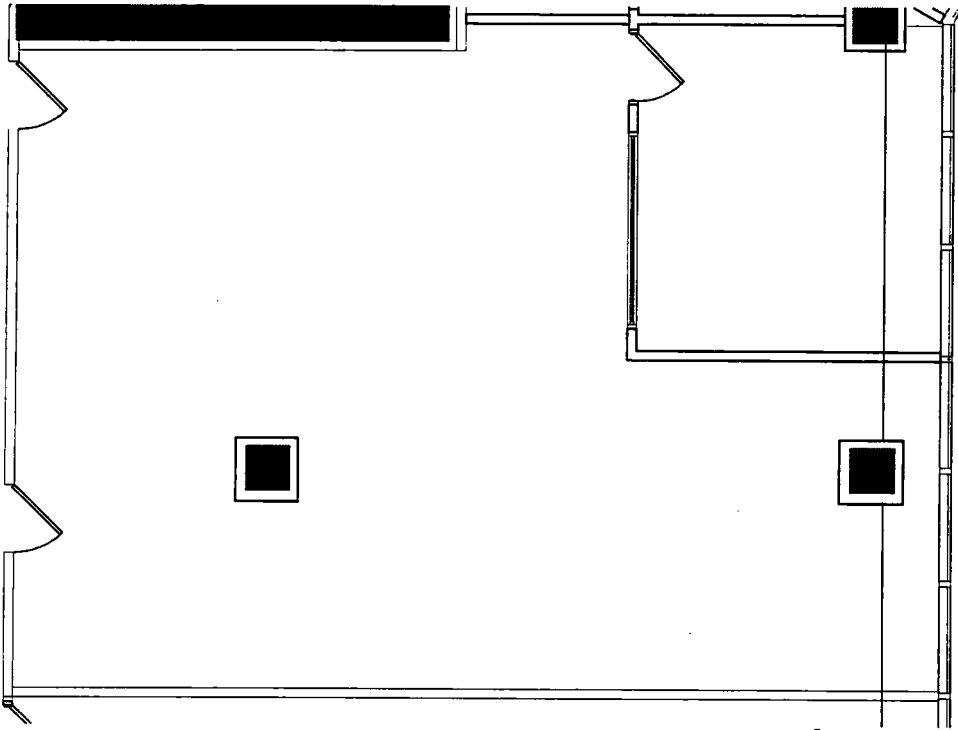
CHECKED BY: XXX

1

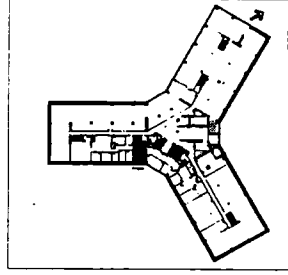




400 Oyster Point Blvd
ste 518 - 1,429 RSF



KEY PLAN



LEGEND

- (N) WALL
- (E) WALL
- DEMO
- (N) DOOR
- (E) DOOR
- (N) WINDOW
- (E) WINDOW



DESCRIPTION

STE 303 LEASING BROCHURE - 1441 RSF

JOB NAME OYSTER POINT MARINA PLAZA

JOB# 208126

LOCATION 400 OYSTER PT. BLVD

DRAWN BY: THH

DATE 11/26/08

SCALE 1/8"=1'-0"

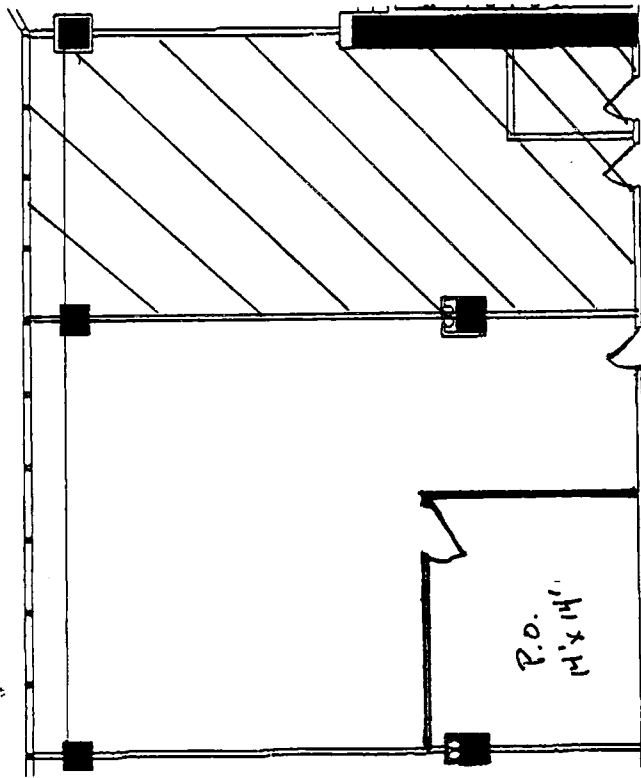
CONTRACTOR

CHECKED BY:

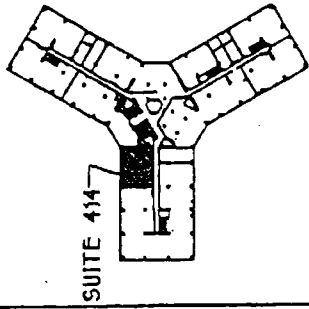
1



400 OYSTER POINT BLVD. SO. SAN FRANCISCO, CA
SUITE 412 - 1,413 RSF



1 FLOOR PLAN



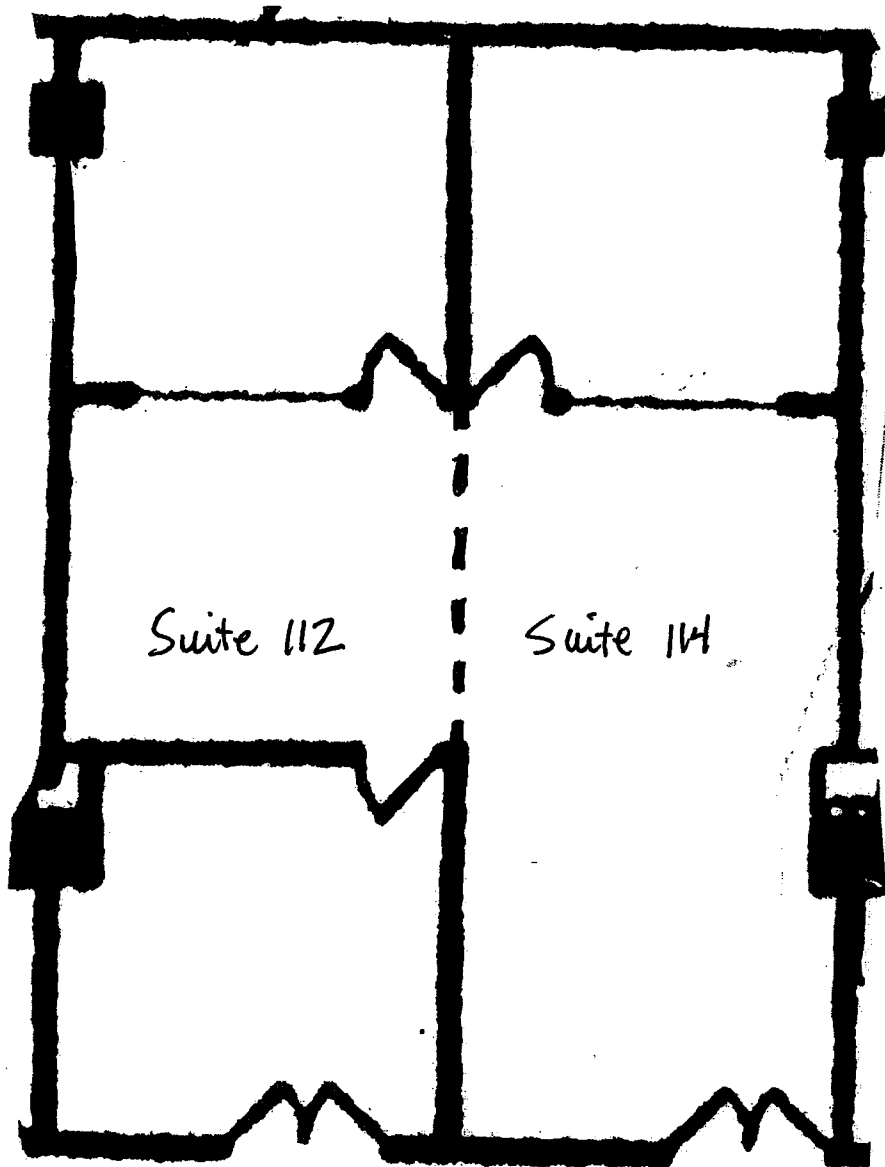
SUITE 414

KEY PLAN - 4TH FLOOR

Exhibit B

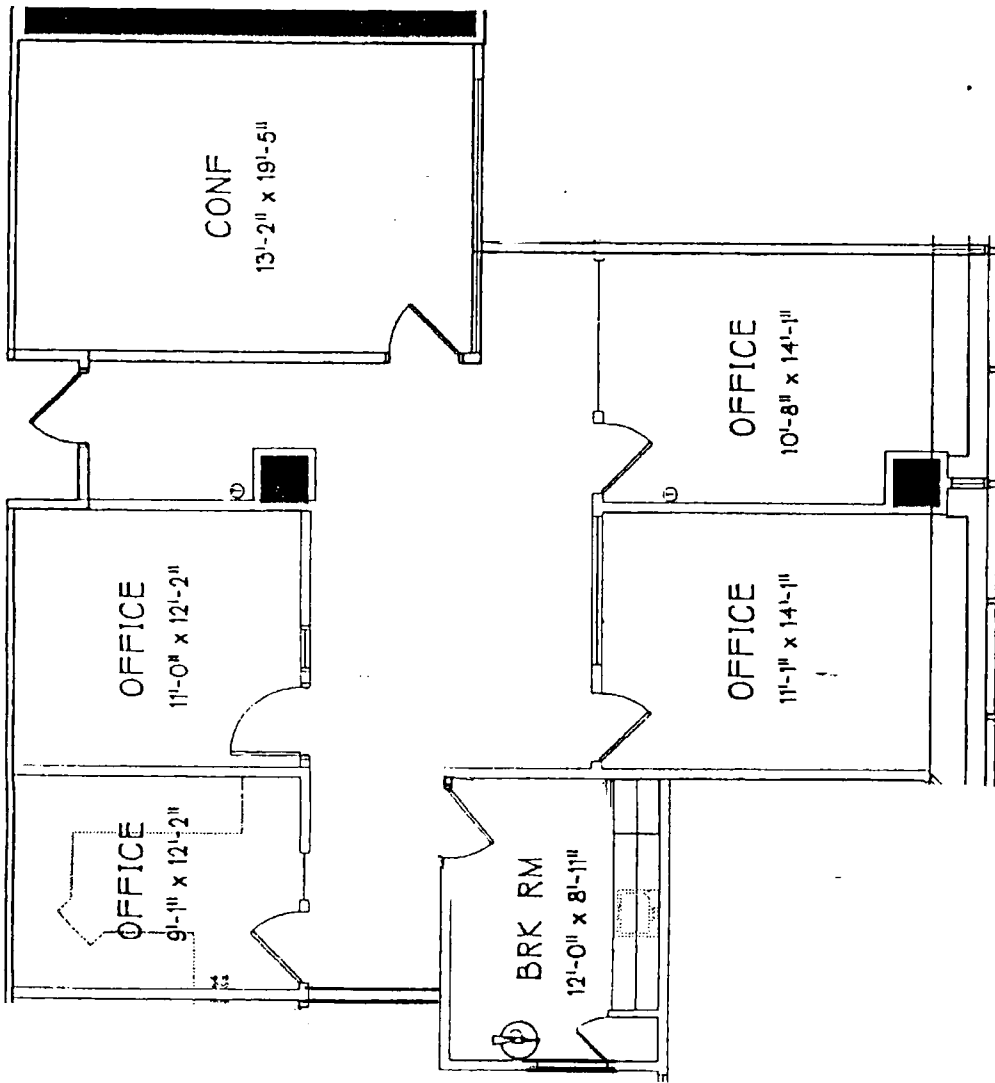
112-114 - 1,449 RSF

400 Oyster Point Blvd.



± 724 RSF

± 724 RSF



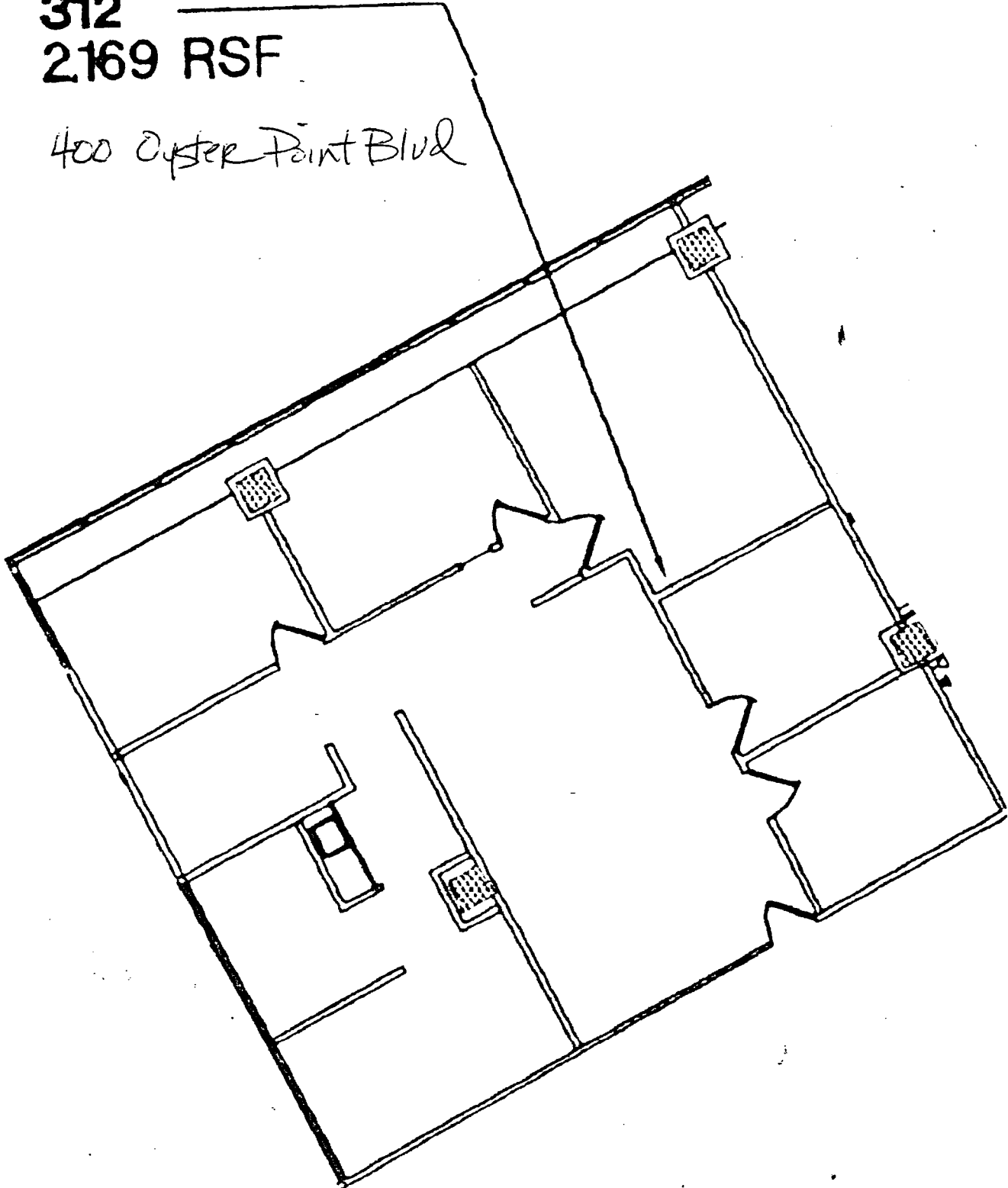
LEGEND

	(N) WALL
	(E) WALL
	DEMO
	(N) DOOR
	(E) DOOR
	(N) WINDOW
	(E) WINDOW
	(E) ELEC.
	(N) DUPLEX
	(N) QUAD

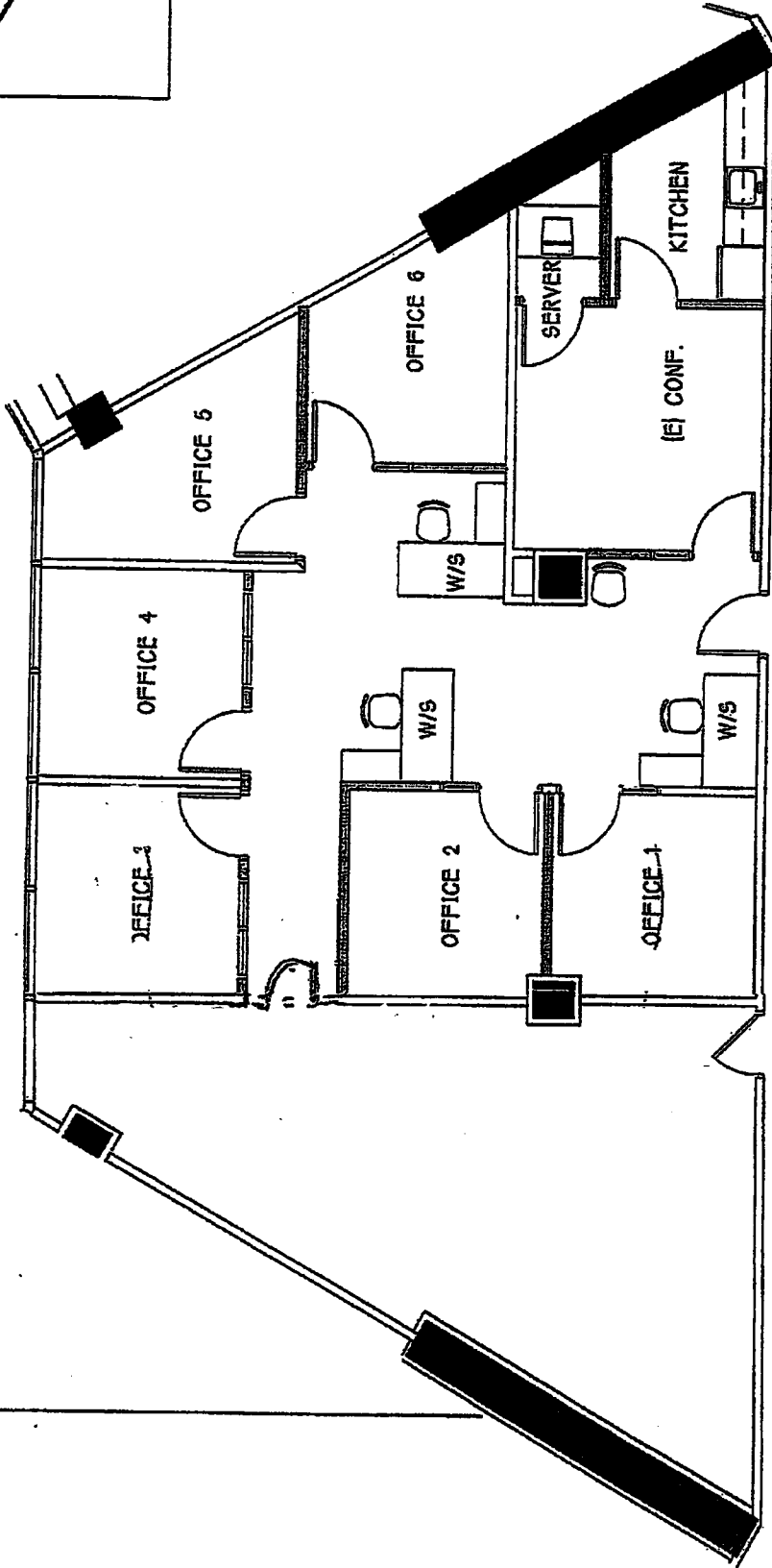
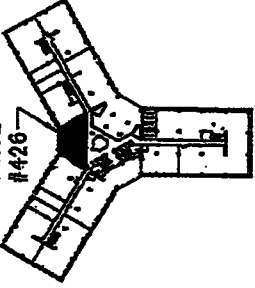
TSH INTERNATIONAL ARCHITECTURE + DESIGN	DESCRIPTION: Ste 502 1,657 RSF		DATE: 6/1/10
	JOB NAME: OYSTER POINT MARINA PLAZA	JOB#: mstr	SCALE: -
LOCATION: 400 OYSTER PT. BLVD	DRAWN BY: THH	CONTRACTOR:	CHECKED BY:
Alpha121017/DWG/IFR 05 400 Oyster Pt Blvd.dwg, Jun 01, 2010 - 5:20pm, Inaley, (C) TSH International			1

312
2169 RSF

400 Cyber Point Blvd



SUITE #426



DESCRIPTION:

4th Floor Suite 426 • 2,219 RSF

JOB NAME

LOCATION

400 Oyster Pt. Blvd

JOB# 201285

DRAWN BY: TC

DATE

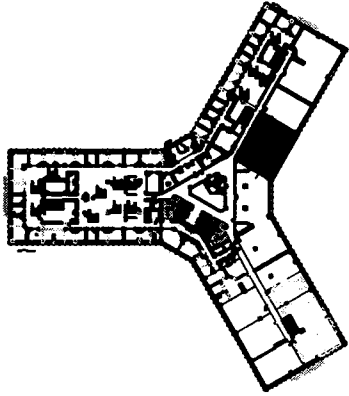
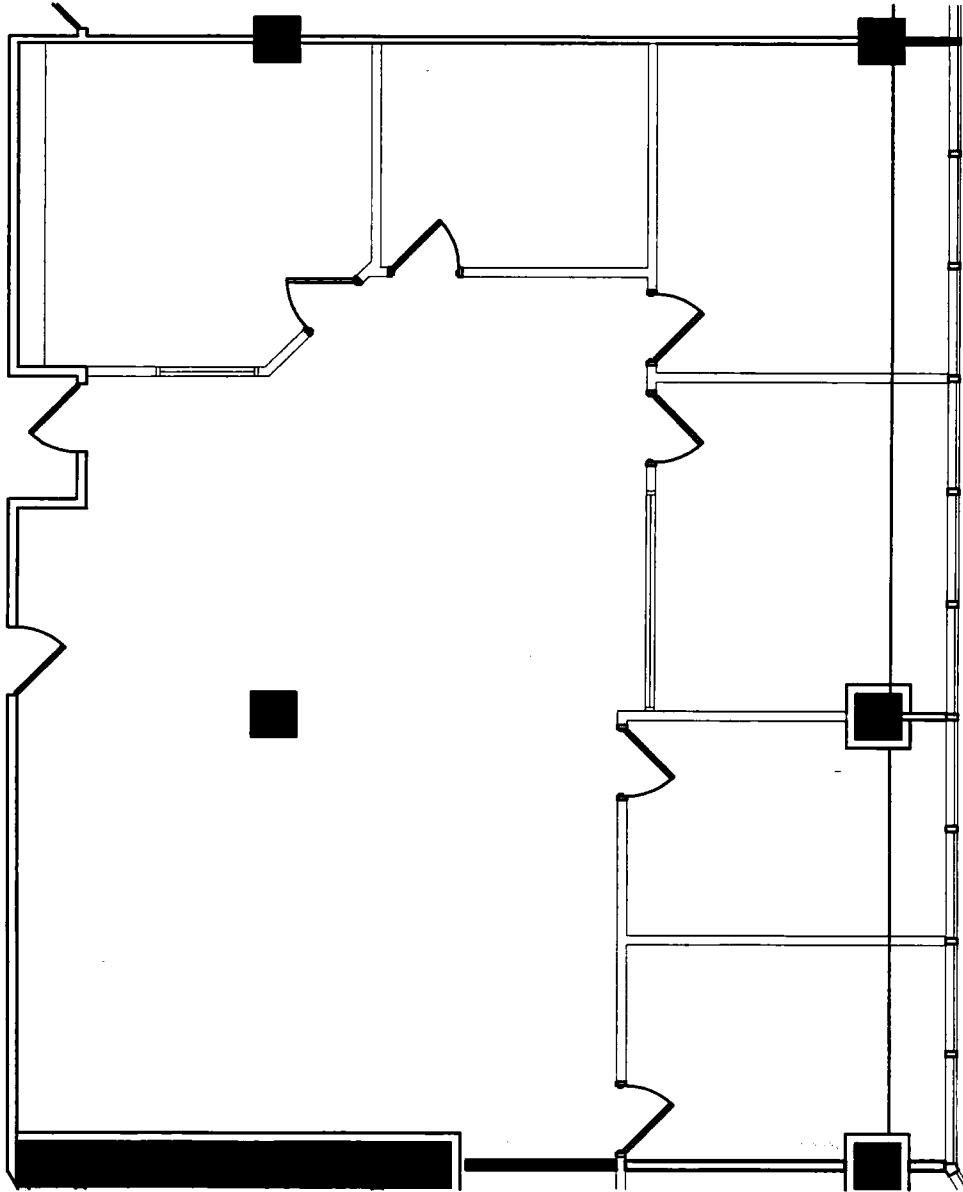
SCALE 1/8" = 1' - 0"

CONTRACTOR

CHECKED BY: CK

2





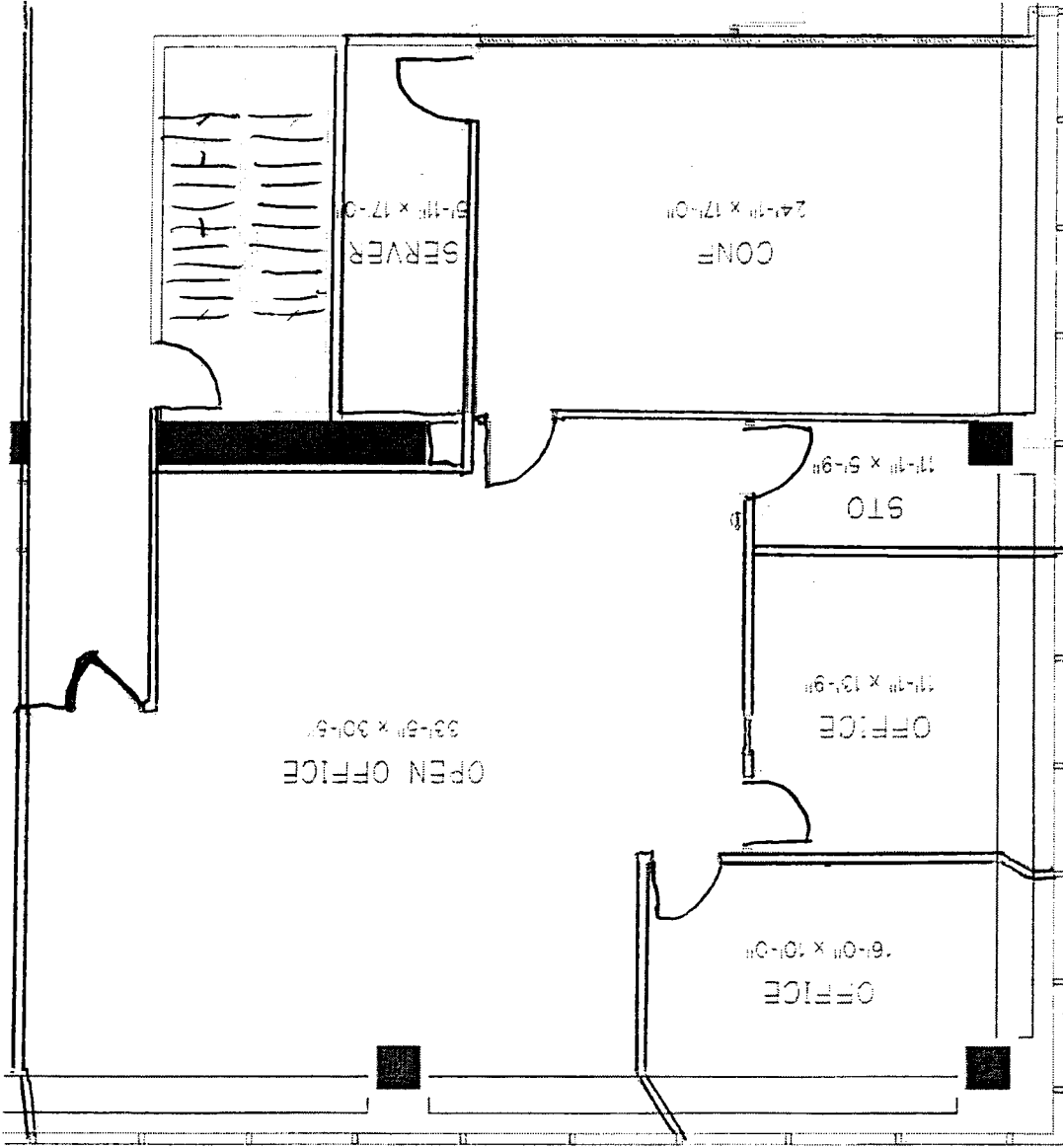
LEGEND

	(N) WALL
	(E) WALL
	(N) DOOR
	(E) DOOR
	(N) WINDOW
	(E) WINDOW

DATE	11/26/08
SCALE	NONE
CONTRACTOR	
CHECKED BY:	

DESCRIPTION	STE 222 LEASING BROCHURE 2,409 RSF
JOB NAME	400 Oyster Pt, SSF
JOB#	208126
LOCATION	OYSTER PT. MARINA PLAZA
DRAWN BY:	THH

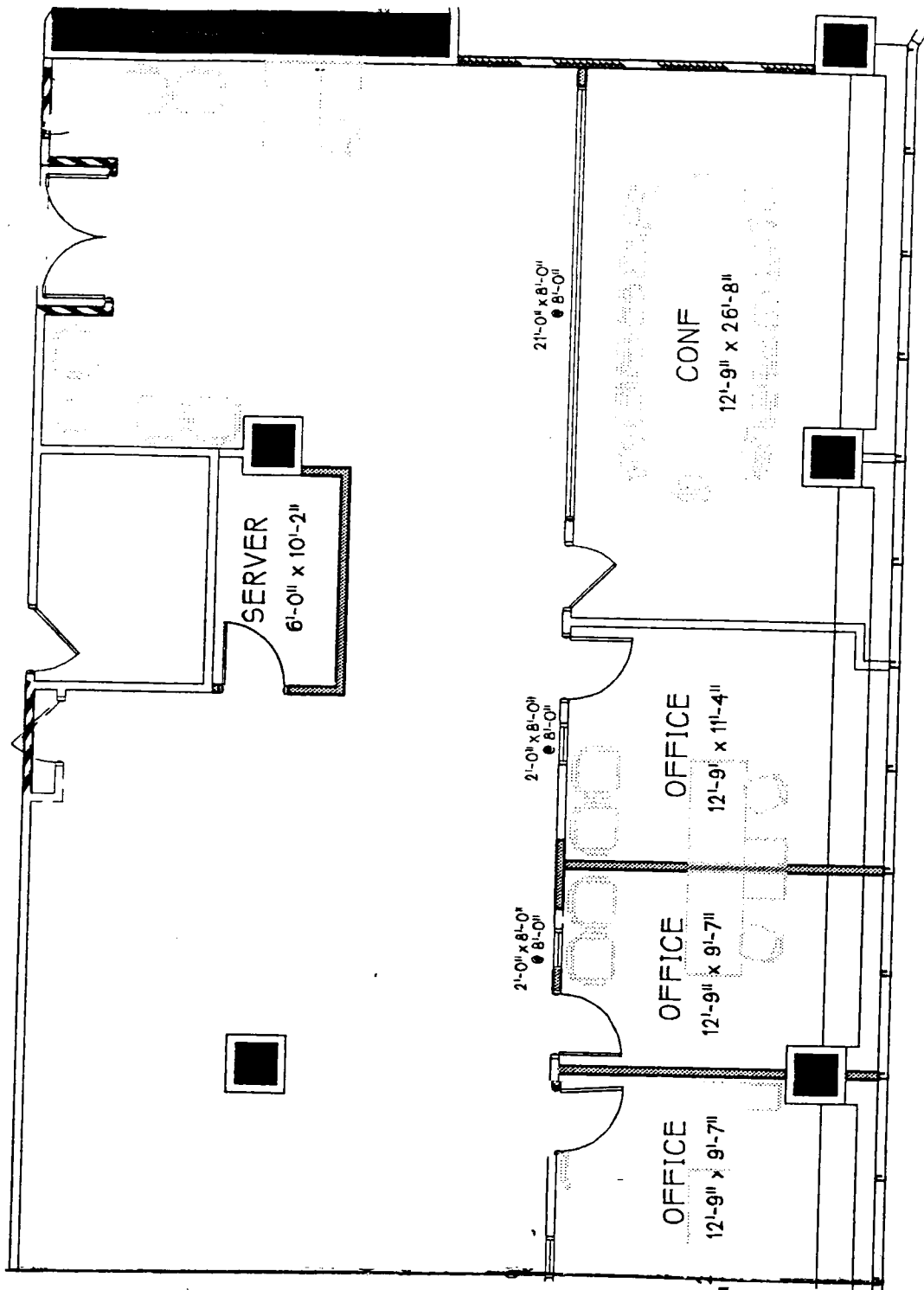
TSH
INTERNATIONAL
ARCHITECTURE
DESIGN



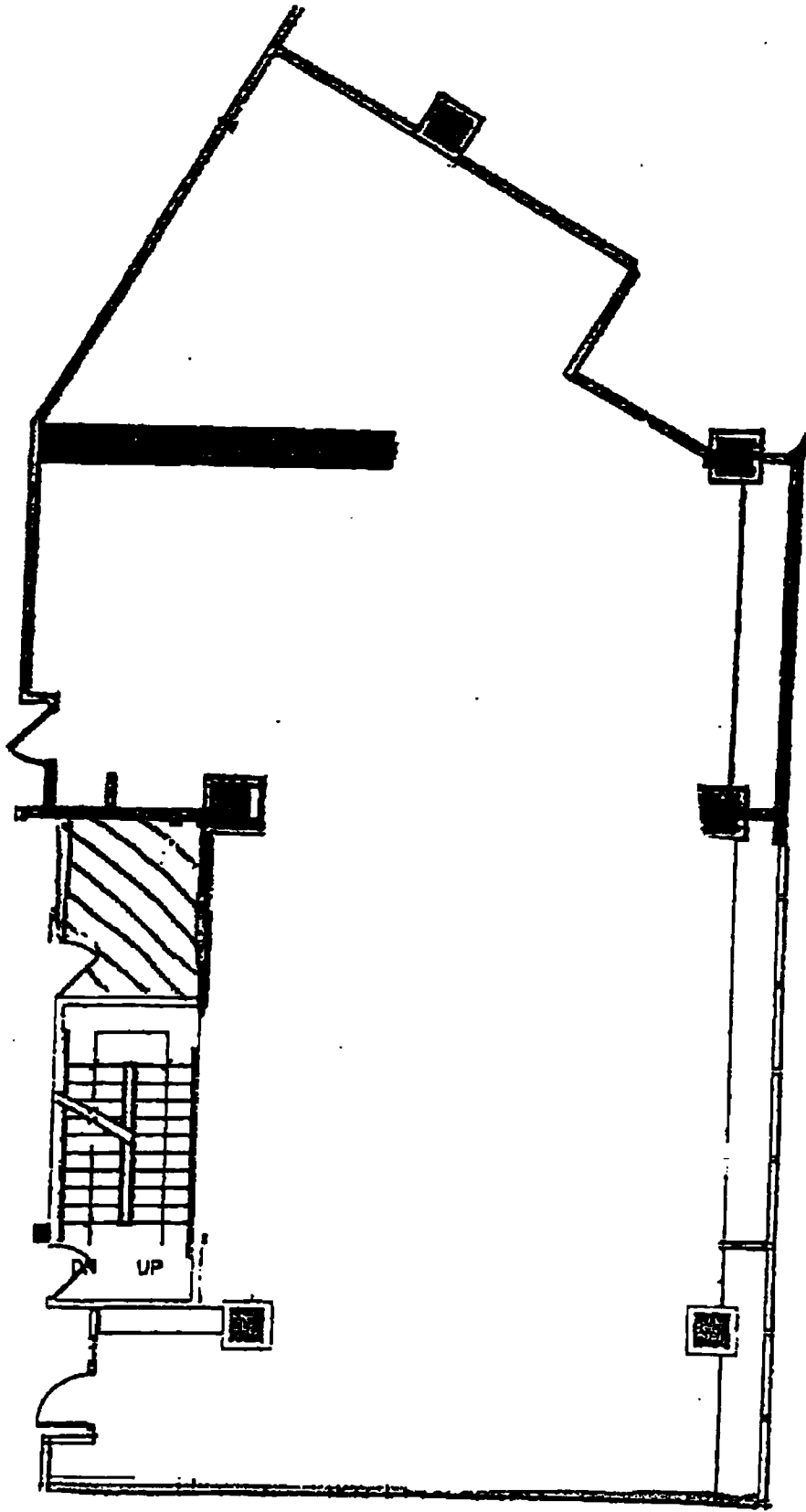
- LEGEND**
- (---) WALL
 - (---) WALL
 - (---) DEMO
 - (---) DOOR
 - (---) DOOR
 - (---) WINDOW
 - (---) WINDOW
 - (---) ELEC
 - (---) DUPLEX
 - (---) QUAD

TII INTERNATIONAL ARCHITECTURE + DESIGN	DESCRIPTION: STE 539 SPACE PLAN - 2,418 RSF	DATE: 4/5/10 SCALE: 1/8"=1'-0" CONTRACTOR: CHECKED BY: XXX	(1)
	JOB NAME: LOCATION: 400 Oyster Pt Blvd. S.S.F.	JOB#: 210111 DRAWN BY: XX	

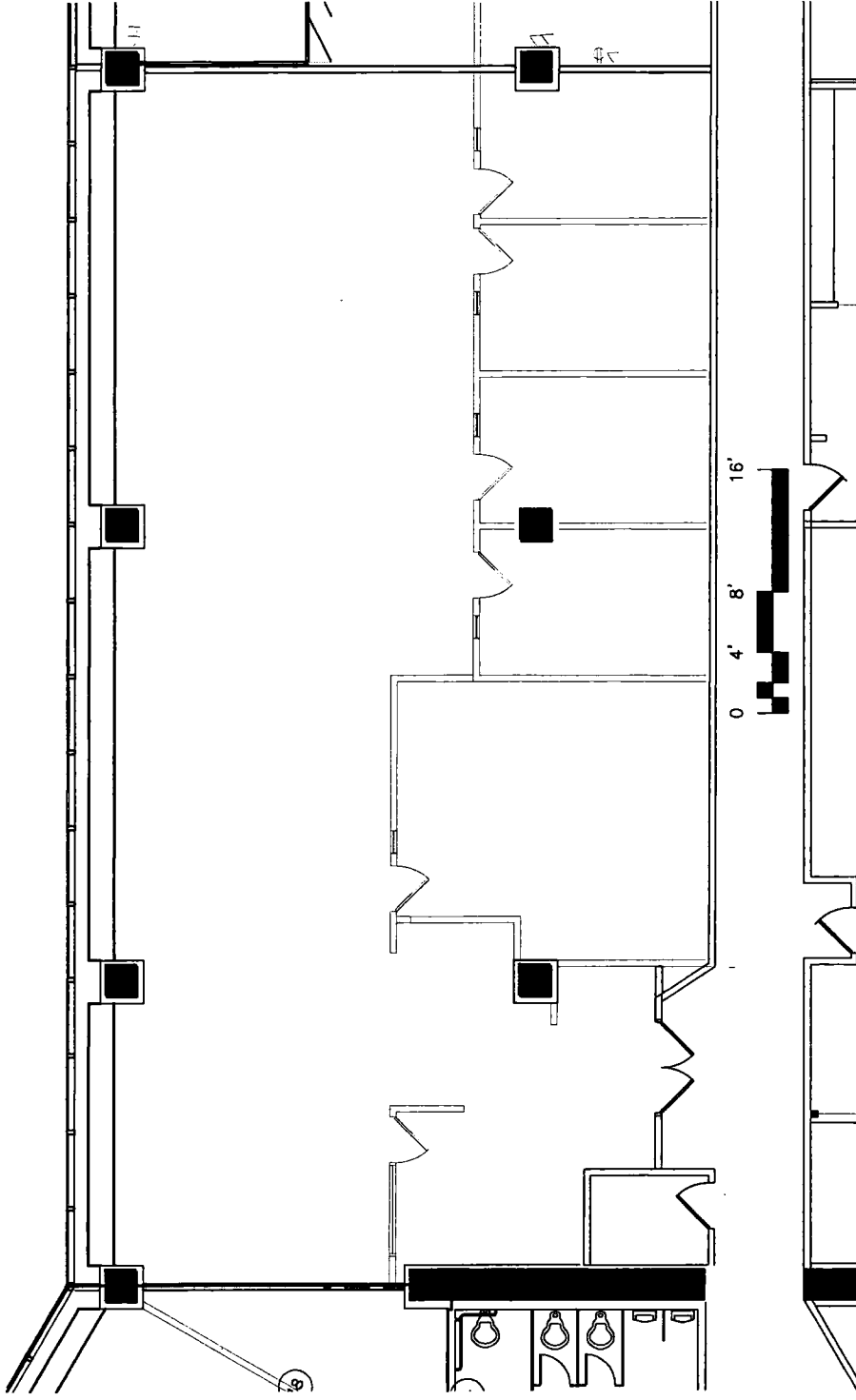
TII ARCHITECTURE INTERNATIONAL 400 OYSTER POINT BLVD. SUITE 539 SAN FRANCISCO, CA 94107



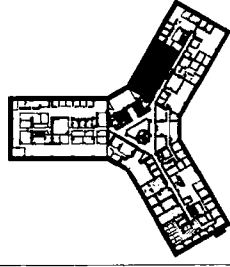
Suite 405
 395 OPB
 2,779 RSF



Suite 335 - 3,375 RSF
400 Oyster Point Blvd. 55F



KEY PLAN



LEGEND

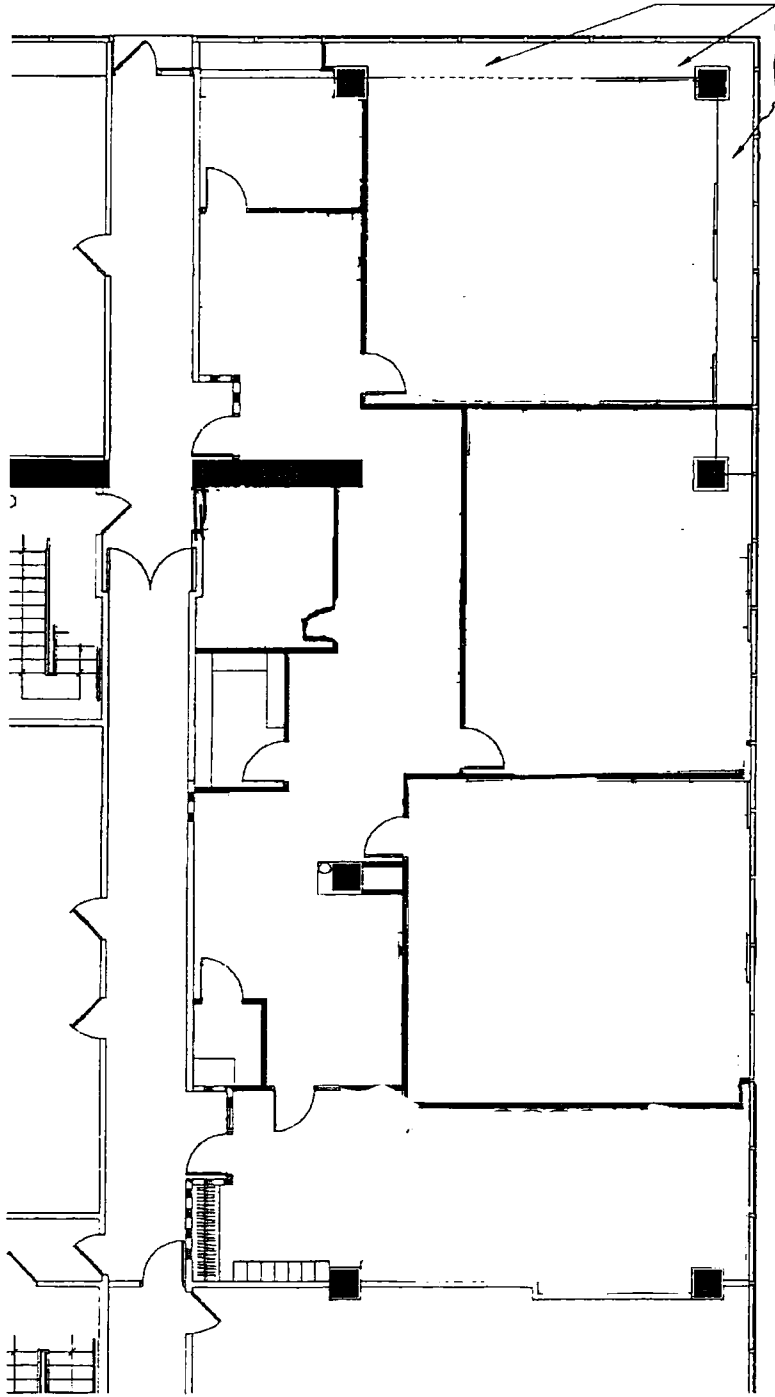
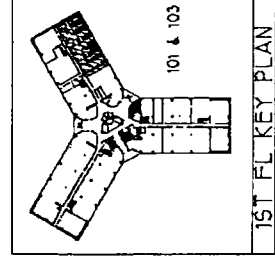
- (N) WALL
- (E) WALL
- DEMO
- (N) DOOR
- (E) DOOR
- (N) WINDOW
- (E) WINDOW

DATE 11/15/06
 SCALE NONE
 CONTRACTOR
 CHECKED BY:

DESCRIPTION:
STE 218 LEASING BROCHURE - 3,751 RSF

JOB NAME OYSTER POINT MARINA PLAZA
 LOCATION 395 Oyster Pt, SSF
 JOB# 206136
 DRAWN BY: THH





EXISTING LEDGE
3'-0" HIGH
2'-7" WIDE



DESCRIPTION:

SPACE PLAN REVISION - SUITE 100-4428 R/SF

JOB NAME:

JOB#: 201267

LOCATION:

400 Oyster Pt. Blvd. STE. 101 & 103

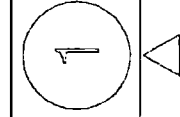
DRAWN BY: TC

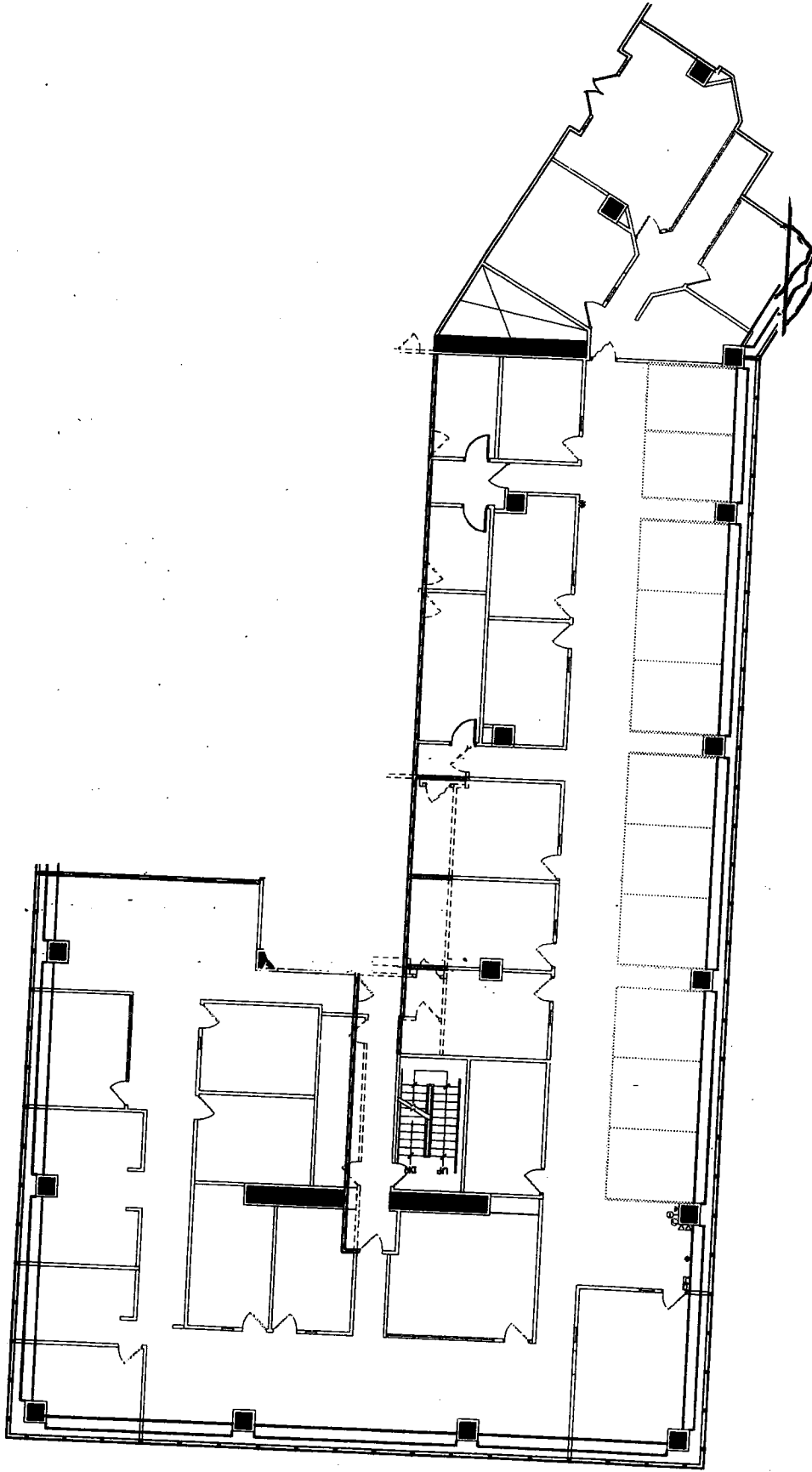
CHECKED BY: CK

DATE: 11/01/01

SCALE: NONE

CONTRACTOR:





T+H
INTERNATIONAL
ARCHITECTURE
+
DESIGN

DESCRIPTION:

STE 220 - 11, 107 RSF

JOB NAME:

210121

LOCATION:

395 OYSTER PT.

DATE: 9/23/10

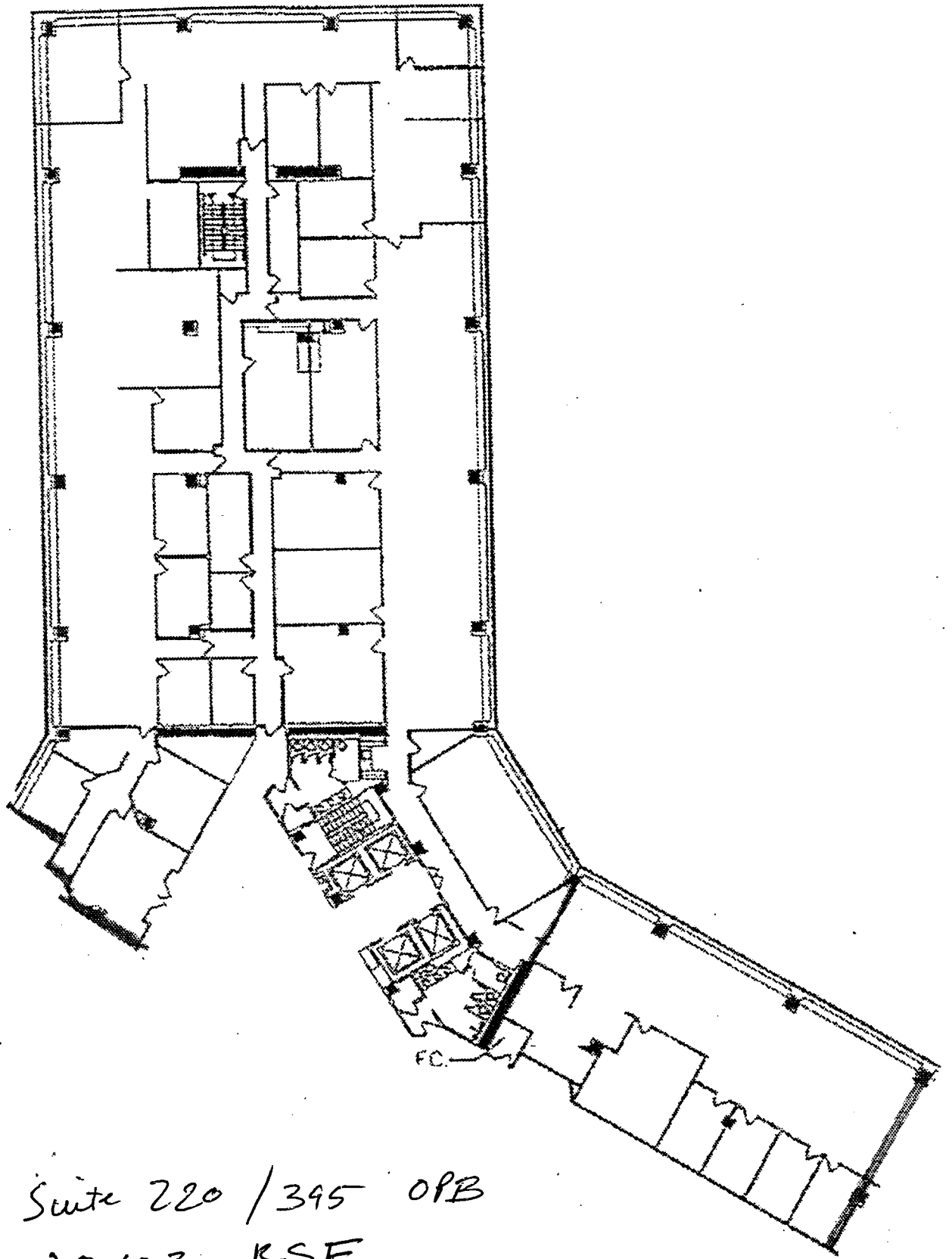
SCALE: None

CONTRACTOR:

CHECKED BY: XXX

3





Suite 220 / 395 OPB
20,623 RSF